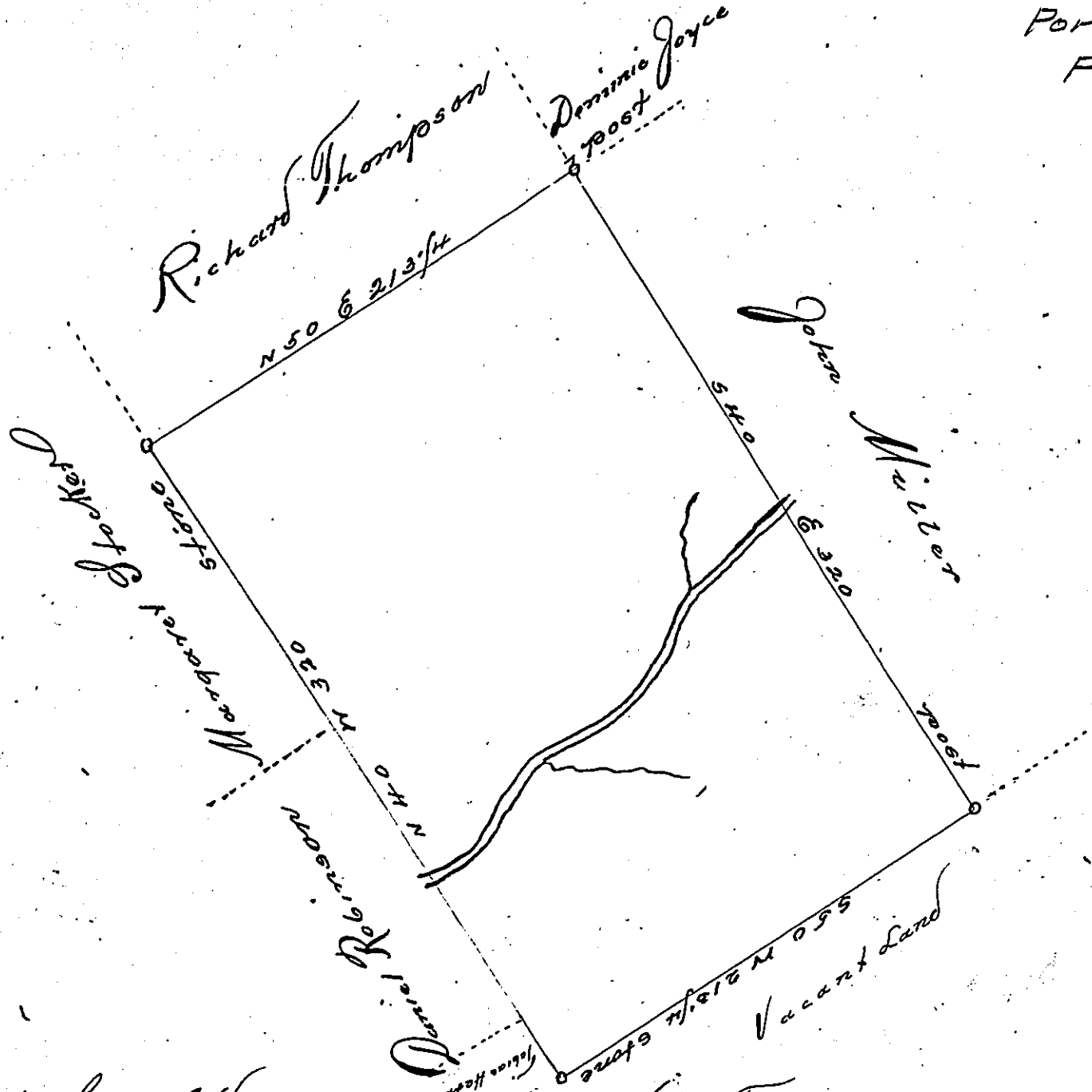
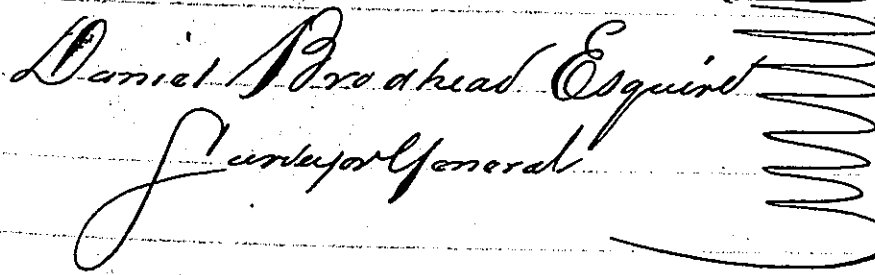
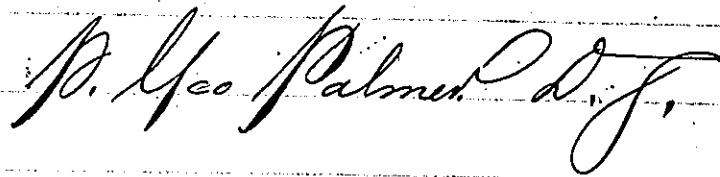


Porter -  
PIKE

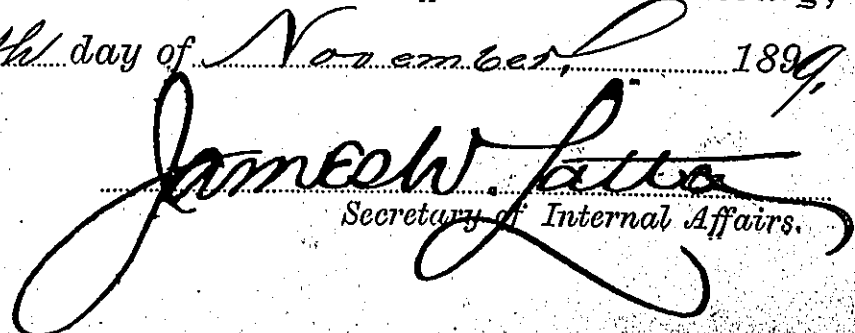


By Virtue of a Warrant dated the 6th. February 1793. Surveyed  
 the 12th. March 1793. to John Taylor the above described tract of land  
 situate Jonah Turners Sugar Cabin creek in Delaware Township  
 Northampton County. Containing four Hundred and two acres fifty-  
 seven perches and the allowance of six p. Cent &c.

 Daniel Proctor Esquire  
 Surveyor General

 P. Geo Palmer D.J.

IN TESTIMONY that the above is a copy of the original remaining on file in  
 the Department of Internal Affairs of Pennsylvania, made  
 conformably to an Act of Assembly approved the 16th day of  
 February, 1833, I have hereunto set my Hand and caused  
 the Seal of said Department to be affixed at Harrisburg,  
 this seventh day of November, 1894

 James W. Latta  
 Secretary of Internal Affairs.